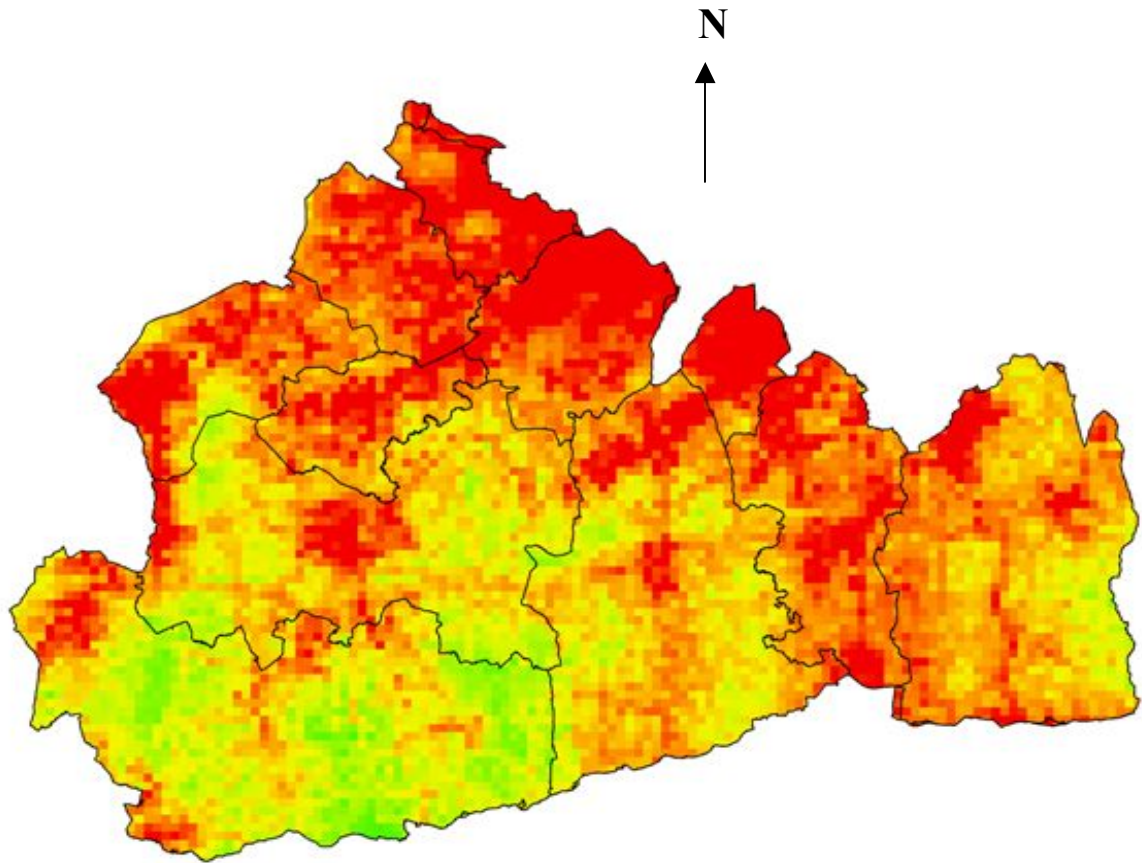


TRANQUILITY MAP OF SURREY



	Most tranquil
	Least tranquil

We have divided the entire land area into 500 metre by 500 metre squares, scored each of these for tranquillity according to the balance of positive and negative factors, and colour coded them accordingly.

The researchers have discovered there are few places in England where you're likely to experience tranquillity. This highlights all the more the need to protect places locally and nationally which offer tranquillity.